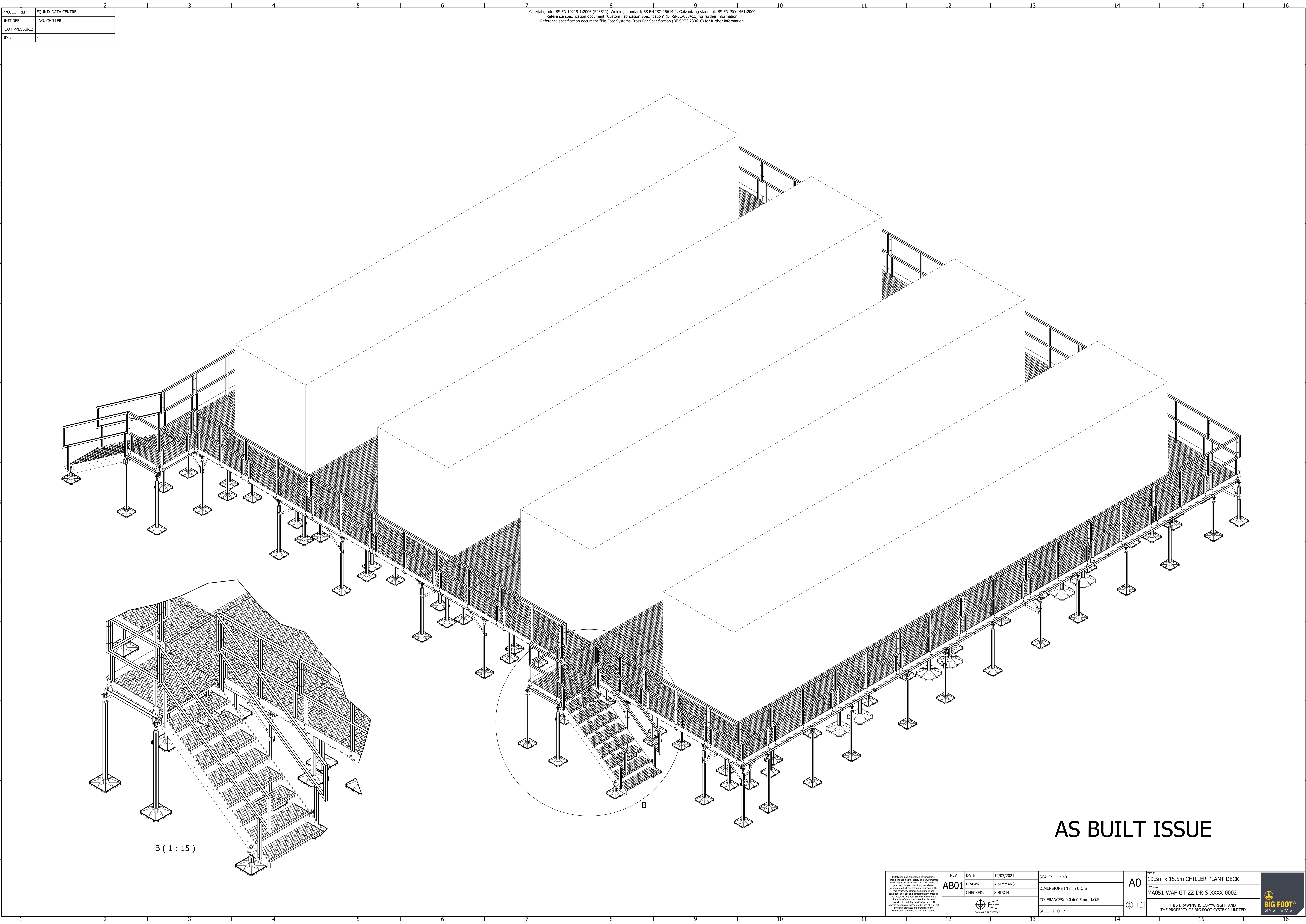


PROJECT REF:	EQUINIX DATA CENTRE
UNIT REF:	4NO. CHILLER
FOOT PRESSURE:	-
UDL:	-

Material grade: BS EN 10219-1:2006 (S235JR), Welding standard: BS EN ISO 15614-1, Galvanizing standard: BS EN ISO 1461:2009
Reference specification document "Custom Fabrication Specification" (BF-SPEC-050411) for further information
Reference specification document "Big Foot Systems Cross Bar Specification (BF-SPEC-230610) for further information



AS BUILT ISSUE

Isolation and application considerations should include health, safety and environmental risks, regulations and standards, codes of practice, design conditions, installation location, product compliance, evaluation of self structure, composition, surface and condition, analysis and component products and materials, Big Foot Systems recommendations that all surface products are handled and installed by suitable qualified persons. All drawings are based on the use of Big Foot Systems products and exclude any items and conditions available on request.	REV	DATE:	19/03/2021	SCALE:	1 : 40	TITLE: 19.5m x 15.5m CHILLER PLANT DECK A0 DWG No. MA051-WAF-GT-ZZ-DR-S-XXXX-0002 THIS DRAWING IS COPYRIGHT AND THE PROPERTY OF BIG FOOT SYSTEMS LIMITED
	AB01	DRAWN:	A SIMMANS	DIMENSIONS IN mm U.O.S		
		CHECKED:	S BIRCH	TOLERANCES: 0.0 ± 0.5mm U.O.S		
				SHEET 2 OF 7		